

# Zealcrete



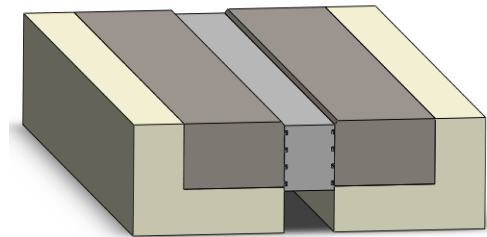
## Zealcrete – Elastomeric Concrete

### Description

*Zealcrete™* is a 100% solid two component, elastomeric concrete which is fast setting and easy to use. It is suitable for new and rehabilitation projects. It can be used with or without armour in high impact, high stress nosing areas where a non-shrink, energy absorbing, flexible, waterproof end dam with outstanding wear resistance is required. *Zealcrete™* formulation results in properties which prevents cracking and moisture intrusion and provides protection and life extension to structures where high impact and chemical intrusion by road salts and petroleum based by-products may threaten.

### Key Features

- ◇ Low viscosity, fast setting & easy to use
- ◇ Allows traffic to be resumed in two – four hours
- ◇ Provides thermal shock and impact protection
- ◇ Waterproof and chemical resistant
- ◇ Abrasion resistant
- ◇ Excellent adhesion to concrete, asphalt & steel
- ◇ Extends the life of the expansion joint nosing
- ◇ Provides a quick and permanent joint repair
- ◇ Possesses properties that make it ideal for high volume traffic, high impact and aggressive environmental conditions



### Surface Preparation

- ◇ Sandblast all surfaces, concrete, steel or asphalt, where *Zealcrete™* is to be placed.
- ◇ Remove all loose materials with clean, dry, compressed air.
- ◇ Surfaces must be clean and dry before material application.

### Application / Mixing Procedure

- ◇ Prime all surfaces with **Miska FC125 Epoxy Resin** just prior to *Zealcrete™* placement.
- ◇ Mix *Zealcrete™* A & B resins first, then add pre-measured aggregates and mix again until uniformly black.
- ◇ Place material into prepared areas, compact and trowel finish.

### Properties (at 7 days)

Compressive Strength	65.5 mPa ASTM D 695
Tensile Strength	16.5 mPa ASTM D 638-82A
Bond Strength, Concrete	3.45 mPa ASTM D-624 (Mode of failure, concrete)
Hardness, Shore D	40 ASTM D-2240
Elongation % (Ultimate)	60%
Tear Resistance	225 ASTM D-624
Gel time	@ 25° C (0.2kg.) 18 min.
Initial Cure	1-3 Hours
Yield per Unit (with supplied aggregate)	Approx 9L/Unit

### Clean Up

Use cleaning solvent. Caution should be exercised so clean up materials do not contaminate product.

## Storage

Store in a cool, dry location. Do not allow product to freeze.

**FOR PROFESSIONAL USE ONLY. FATAL IF TAKEN INTERNALLY. KEEP AWAY FROM OPEN FLAME. KEEP OUT OF REACH OF CHILDREN**

Disclaimer: The information contained in this publication is intended to give a fair description of the products and their capabilities. No responsibility or liability by the manufacturers will be accepted for misuse, misreading or deviation from the recommended guidelines of these products. As new technology is introduced, or industry standards are altered, Miska reserves the right to alter existing specifications without notice.